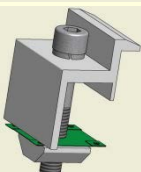
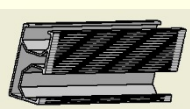




Adjustable Tilt Angle Roof PV Mounting System

Product Features:

1. Fewer components. Modular design, all the parts are prefabricated in factory. So only 8 components needed to be assembled in the field. See left pictures;
2. Fewer tools needed. Highly standardized. Only simple tools needed. About 3 tools. See right pictures;
3. Tilt angle can be adjusted. Here are 3 series: $0\sim 15^\circ$, $15\sim 30^\circ$, $>30^\circ$. Tilt angle can be adjusted according to project spot.



Product Specification:

1. Roof Type: tin roof, asphalt shingle roof
2. Material: Al6005 and SS304;
3. PV Type: major brand PV module with or without frame;
4. Module Orientation: portrait or landscape;
5. Surface B, C
Roughness:
6. Wind Speed: $\leq 60\text{m/s}$;
7. Snow Load: $\leq 1.4\text{KN/m}^2$;
8. Tilt Angle: $0\sim 15^\circ$ 、 $15^\circ\sim 30^\circ$ 、 $30^\circ\sim 60^\circ$;
9. Average Distributed Weight: $0.8\sim 2.0\text{PSF}$

Shanghai Ecopro Technology Co., Ltd.

Tel : +86 21 53935509

Email: sales@ecopro-tech.com

www.ecopro-tech.com